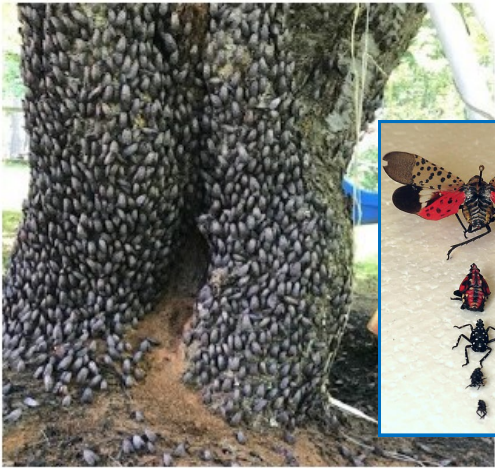


URGENT! Spotted Lanternfly

Public Meeting/Training/Q&A



Sponsored by: Penn State Master Gardeners and the Susquehanna County Commissioners



Cherry tree infested with Spotted Lanternfly in Berks County, PA

Thursday, May 17th

6:30-9pm

Mountain View High School

Kingsley, PA



SPEAKERS:

Sarah Hall-Bagdonas, Northern Tier Hardwoods

Timothy Latz, DCNR Service Forester

The Spotted Lanternfly (SLF) is a serious threat to the general public, the forest products industry, as well as all commerce in Pennsylvania. This destructive insect feeds on a variety of over 70 species of plants including hardwood trees, grapes, apples, peaches, ailanthus, hops and certain ornamental plants.

There is currently a quarantine in place for 13 counties in southeastern Pennsylvania to try to stop the movement of the invasive pest. **So this affects everyone! Nurseries, farm stores, landscapers, mulch businesses, loggers, truckers AND travelers and vacationers! Businesses: Educate your staff!**

Businesses, government agencies and other organizations who transport in the quarantined area must obtain SLF permits in order to continue moving in and out of the quarantine zone. In order to receive a permit, you must take a training on SLF and pass a 20-question multiple choice test. This meeting will serve as the training you need to obtain the permits.

Test date: Friday, May 18 from 2-4 pm and at the County Office Building conference room at 81 Public Avenue in Montrose.

Agenda: This meeting and Q&A session will cover general information about the Spotted Lanternfly including: initial detection, biology and life cycle, current distribution, impacts of pest feeding, recorded damage, pathways for spread, and control methods.

We will also cover what to do: if you find a SLF, quarantine expansion, compliance agreements and whatever questions you have.

For more information: Penn State Extension Master Gardeners: 570.666.9003
susquehannamg@psu.edu. OR <https://extension.psu.edu/spotted-lanternfly>